



INDIAN SCHOOL MUSCAT
FIRST SUMMATIVE ASSESSMENT: 2016-2017
SCIENCE - RETEST

STD : VII
DATE : 09.10.2016

MAX MARKS: 60
TIME: 2 HOURS

- ALL ANSWERS TO BE WRITTEN IN SEPERATE ANSWER SHEET PROVIDED.
- Q.NOS. 5-13 CARRY 1 MARK EACH.
- Q. NOS. 14-22 CARRY 2 MARKS EACH.
- Q.NOS. 23- 25 CARRY 3 MARKS EACH.
- Q.NO. 26 CARRIES 4 MARKS.

SECTION – A (20 MARKS)

Q1.FILL IN THE BLANK:

- a. A _____ is the smallest unit of matter that can exist independently.
- b. We measure relative humidity using an instrument called _____.
- c. The degree of hotness or coldness of a body is called_____.
- d. Energy in the body is stored in the form of_____ molecule
- e. A dark funnel shaped cloud that reaches from the sky to the ground is called_____.

Q2. CHOOSE THE CORRECT ANSWER:

- a. Which of the following do not use the heating effect of electric current?
i. Electric bulb ii. Room heater iii. Electric bell iv. Electric toaster
- b. Tissues that carry water and minerals to all parts of plants.
i. Phloem ii. Xylem iii. Root hairs iv. Guard cells
- c. Which of these animals has large ears to radiate heat?
i. Polar bears ii. Seals iii. Fennec Fox iv. Walrus
- d. Which of the following is a method to prevent rusting?
i. Crystallisation ii. Chromatography iii. Galvanisation iv. Neutralisation
- e. Which of the following organism show Anaerobic respiration?
i. Euglena ii. Yeast iii. Paramecium iv. Amoeba

Q3. STATE TRUE OR FALSE:

- a. In a symbiotic relationship only one of the two organisms is benefited.

PTO →

- b. Water at a higher temperature feels hotter.
- c. Salts are the purest form of a substance with a definite shape.
- d. The greater the difference in air pressure, slower the air moves.
- e. In the symbol of a cell, the longer line denotes the negative terminal.

Q4. NAME THE FOLLOWING:

- a. S.I unit of heat.
- b. Changes in structure or behaviour of a species that allow it to survive in a habitat.
- c. The network of air tubes in insects.
- d. Bacteria which help in nitrogen fixation.
- e. Instrument used to measure wind speed.

SECTION – B (40 MARKS)

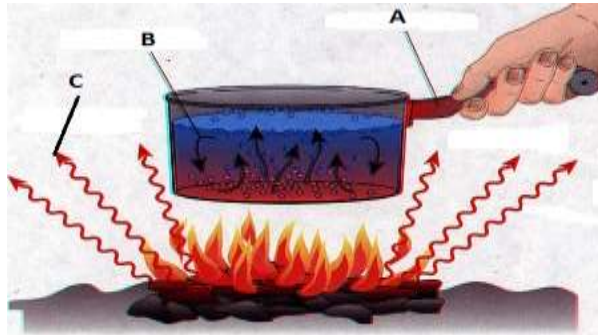
- Q5.** How does an electric fuse protect electric circuits from damage and possible fires?
- Q6.** What does the movement of air in the coastal areas during night gives rise to?
- Q7.** Write the word equation to represent the process of rusting.
- Q8.** How does the distance from the equator influence the climate of a place?
- Q9.** What is a partial parasite?
- Q10.** State the function of the element used in electric appliances.
- Q11.** In places of hot climate it is advised that the outer walls of homes be painted white. Give reason.
- Q12.** What are the two characteristics of wind movement?
- Q13.** State the importance of Haemoglobin in the process of respiration.
- Q14.** Differentiate between Aerobic respiration and breathing. **(2 points)**
- Q15.** You are provided with four electromagnets with 20, 40, 60 and 80 turns. Which electromagnet will have maximum strength? Give reason.
- Q16.** Write the symbols for the following elements.
Sodium , Chlorine , Mercury, Phosphorous

Q17. Give reasons:

- a) Large ears help an animal living in hot places
- b) Some desert animals make burrows and hide during the day time.

Q18. Draw a neat diagram of open stomata and label any **two** parts.

Q19.



- a) In the given diagram, identify the mode of heat transfer labelled A, B & C.
- b) Which among the three is the fastest mode of heat transfer?

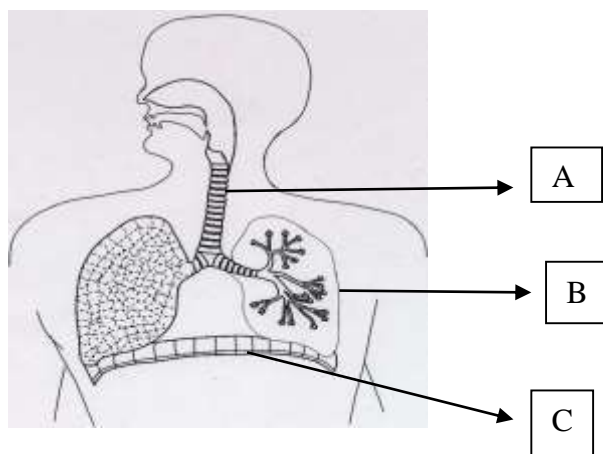
Q20. When baking soda is mixed with Vinegar, bubbles are formed due to the evolution of a Gas.

- a) What type of change is it? Give one reason.
- b) Write the word equation for the above reaction.

Q21. Camels are adapted to desert climatic conditions. State any two adaptive features that help them to live in the desert conditions.

Q22. What is a storm? What are they called in North America and in India?

Q23. Observe the diagram and answer the questions below.



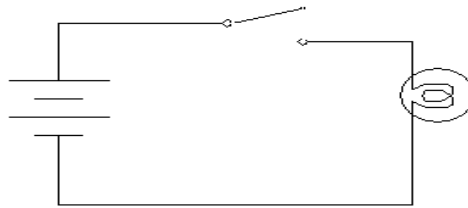
- a). Label the parts **A** and **B**.
- b). What is the role of **C** during inhalation?
- c). How do we test the presence of carbon dioxide in our breath?

PTO →

- Q24.** a) What is the advantage of using alcohol over mercury in thermometers? (2 points)
b) The small red arrow in the clinical thermometer indicates a temperature. What is the temperature both in Celsius and Fahrenheit scale.

- Q25.** Lichen and Pitcher are two different plants.
a) Name the modes of nutrition shown by them.
b) Under what conditions do pitcher plants grow?
c) Lichen is an association of two different types of organism. Name the two organisms.

Q26.



- a). The bulbs do not glow in this circuit? Why?
b). How can they be made to glow?
c). What is the material used to make the filament in the electric bulb?
d). What is the principle used in the glowing of the electric bulb?
